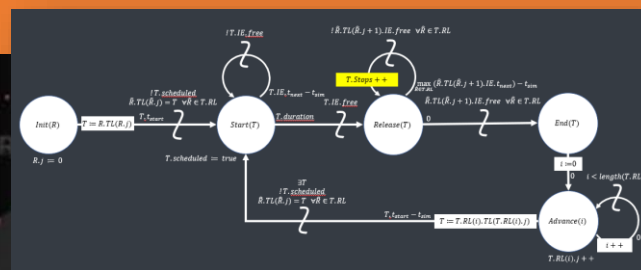
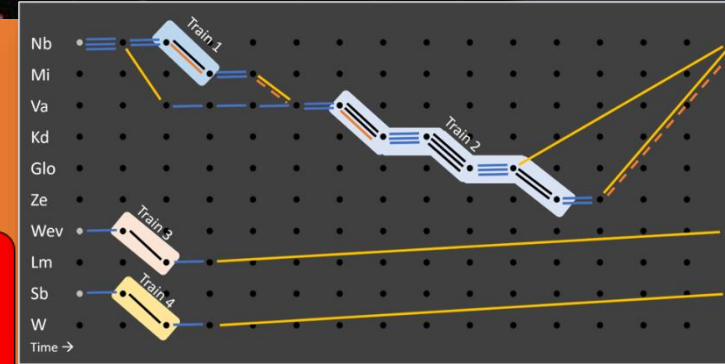
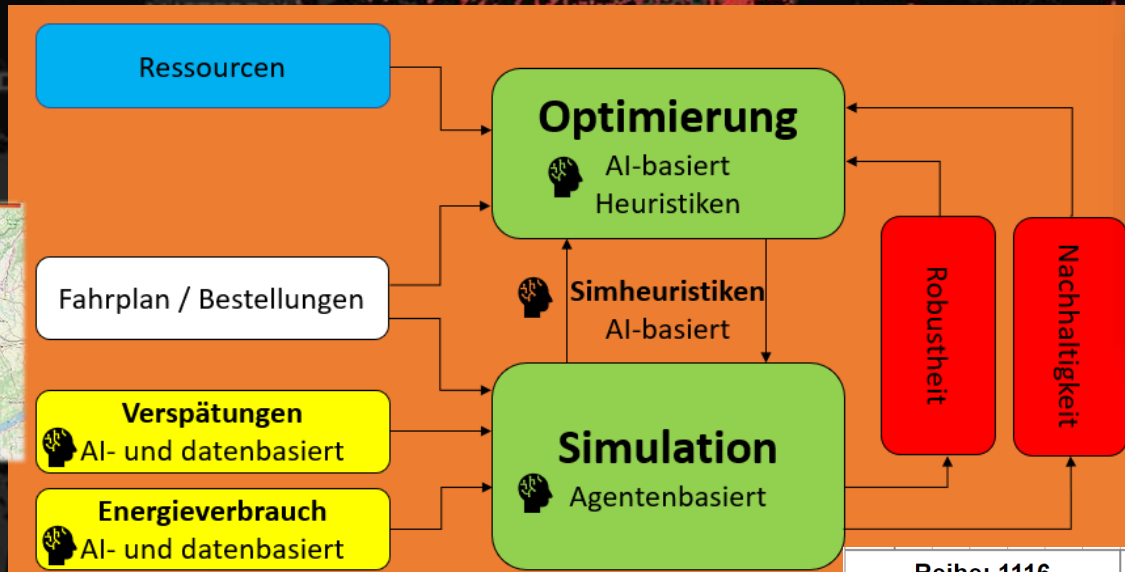
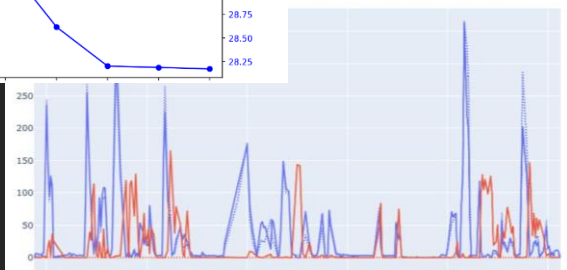
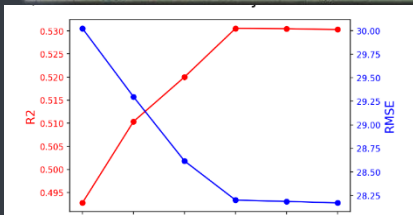


# Green-TrAIn-Plan



Reihe: 1116		Lokumlaufplanung		Gesamt km: 1420754	
Anzahl TFZe: 334				Produktiv km: 1297139	
				Leer km: 123615	
Tag	1-10	11-20	21-23	km	
Do	47800	47800	166	1649	=>23
23					
<=27					
Do	45860			517	=>24
24					
<=16					



dwh  
simulation services  
technical solutions



universität  
wien



TECHNISCHE  
UNIVERSITÄT  
WIEN

