

# Smart Homes

Forschung für längeres und  
unabhängiges Leben zu Hause

Benefit – Demografischer Wandel als Chance  
Transnationaler Workshop

11. November 2014, Rathaus Innsbruck

Alexey Andrushevich  
Senior Researcher





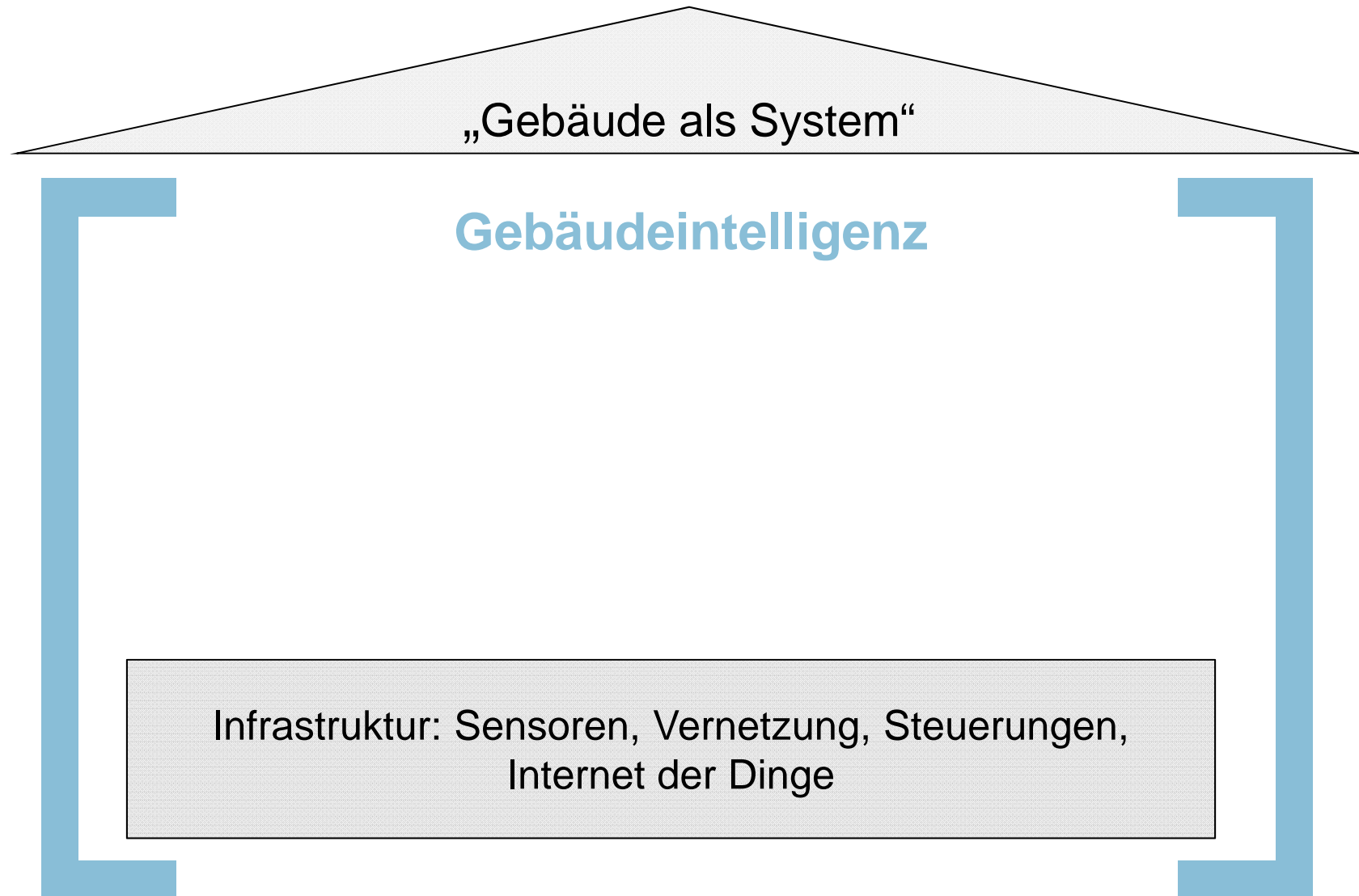
## Ziel

- Für Normalbürger erschwinglich
- Einfach installierbar und bedienbar (plug'n'play)
- Funktioniert 100% zuverlässig in allen Situationen

# Massentauglichkeit

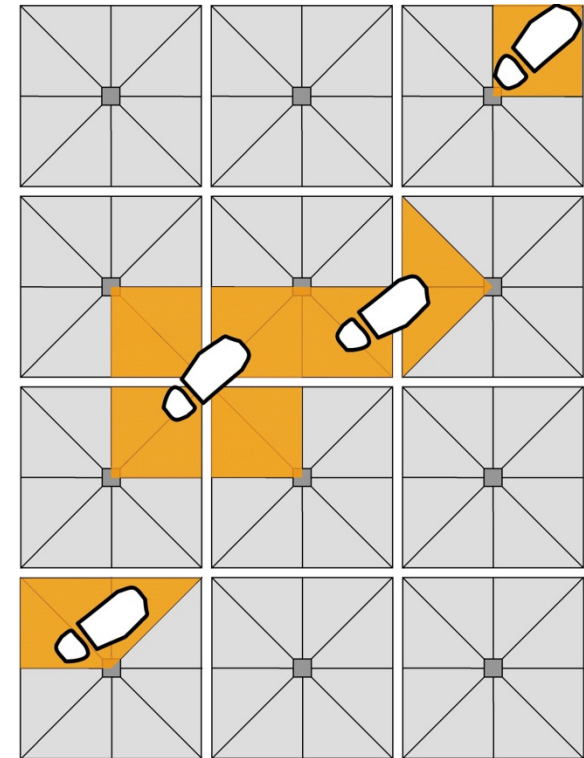
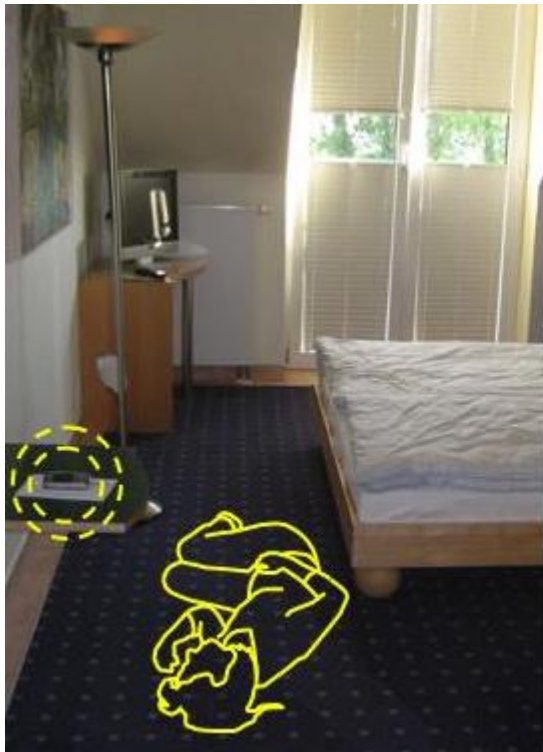
Echter Kundennutzen ersichtlich

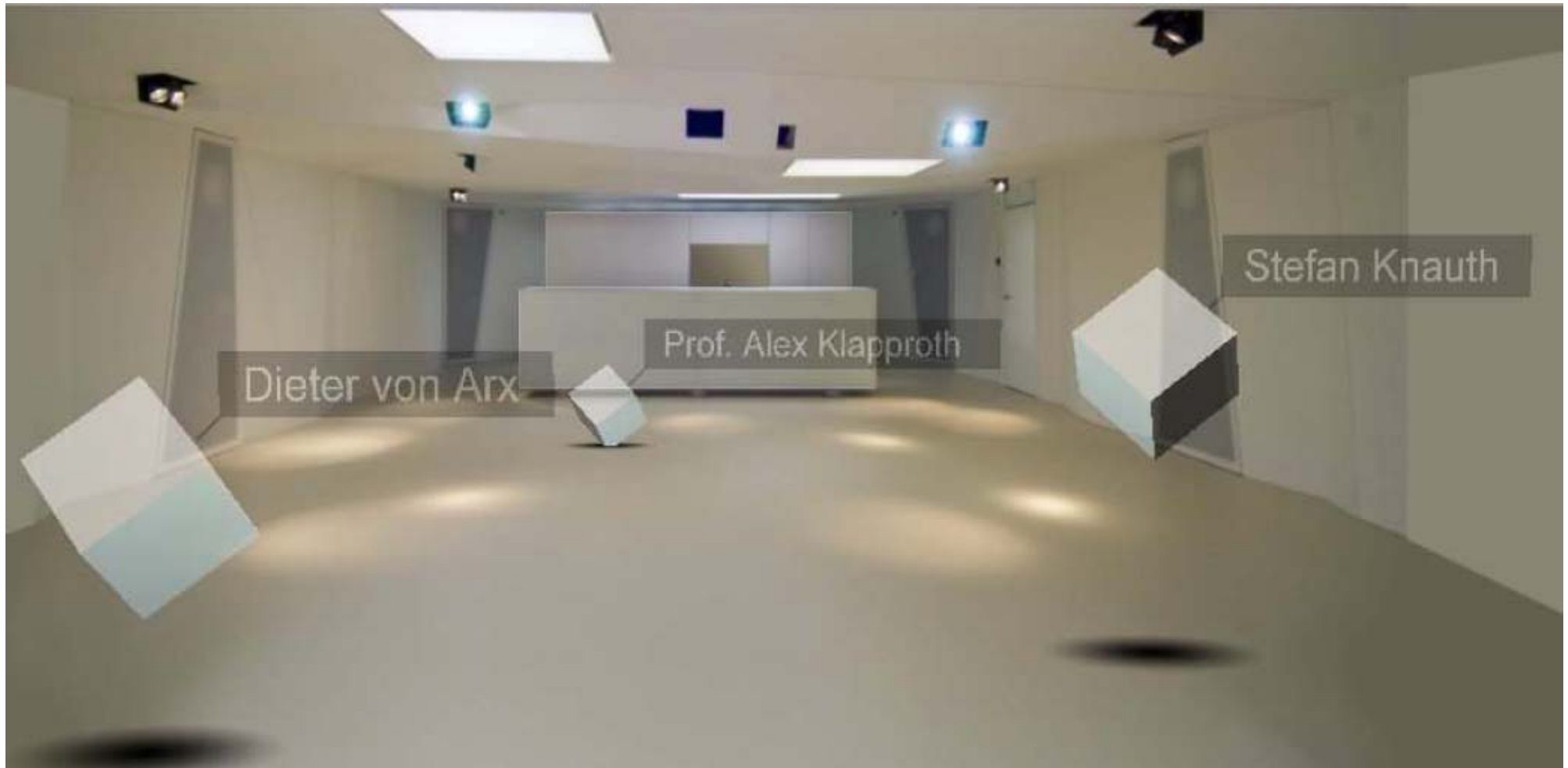
Nicht nur für Tüftler und Wohlhabende



# Sensoren morgen

- **Unauffällig**
- **Nicht am Körper**
- **z.B. direkt im Boden**



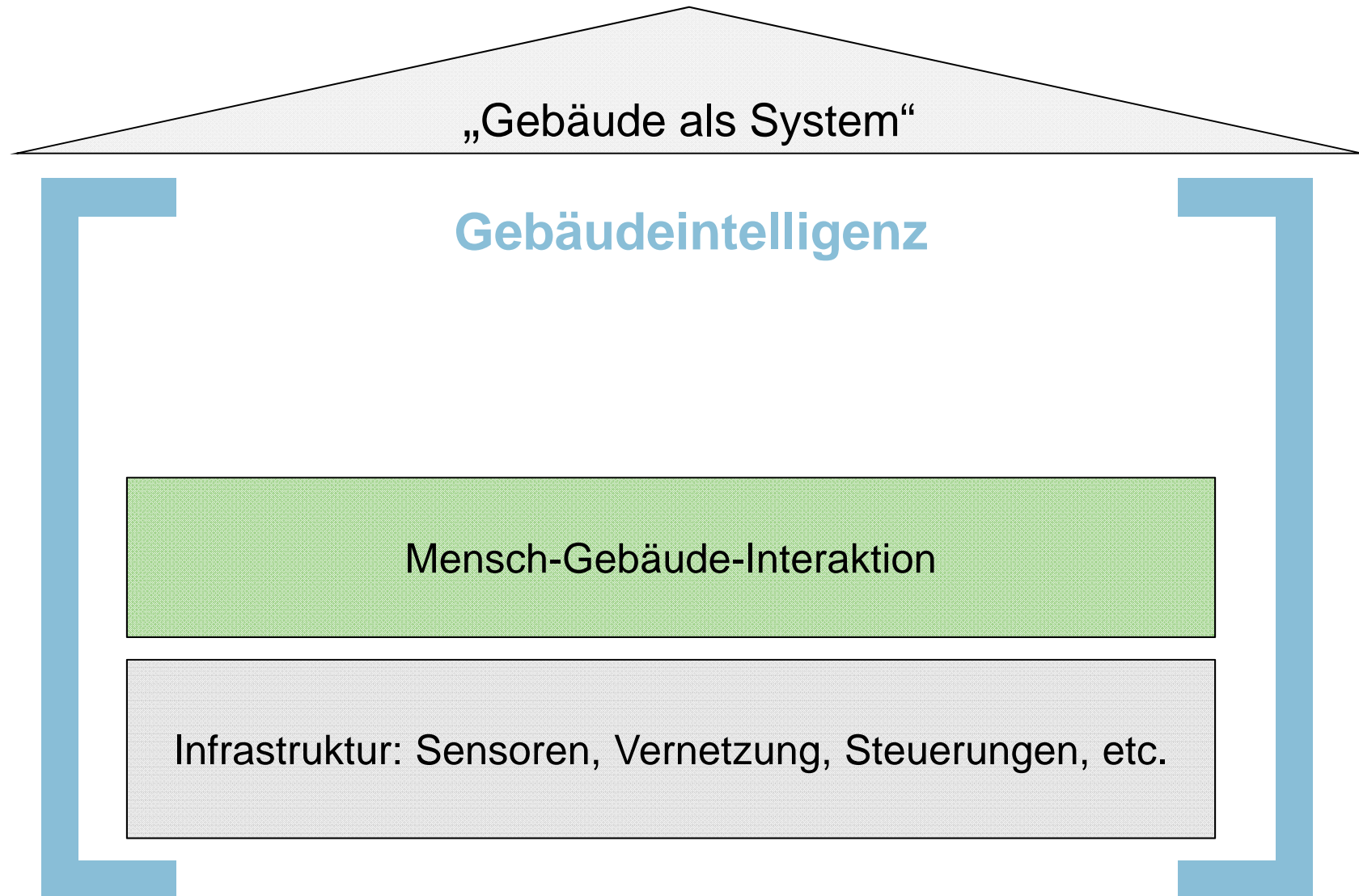


# Vernetzung

i|Home|Lab



Source: E.on UK - EDRP Report







Interaktion benutzerfreundlich?



Streckenpläne

Ticketautomaten

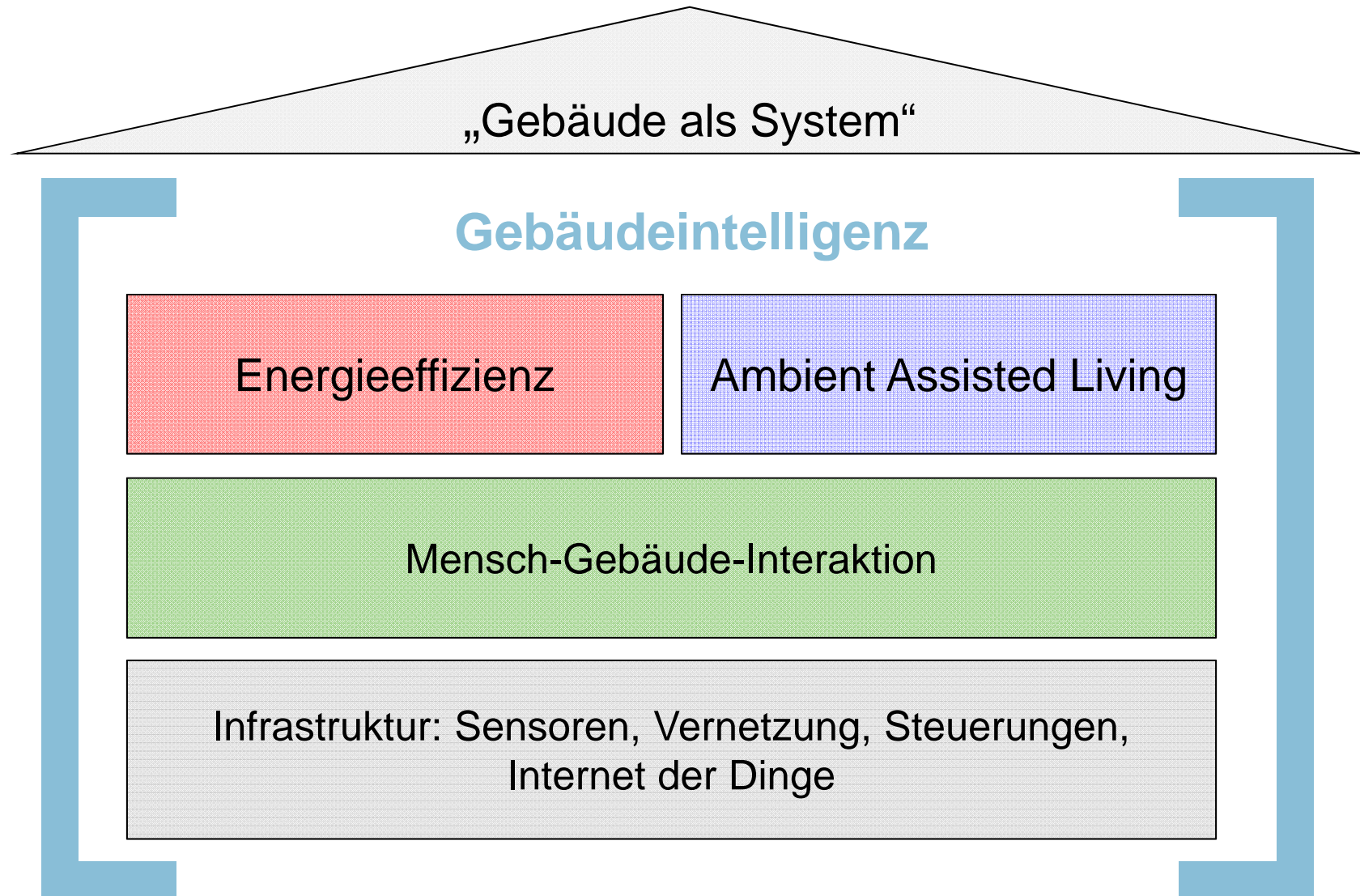
Menschliche Hilfe

# Adaptive-UIs

i|Home|Lab

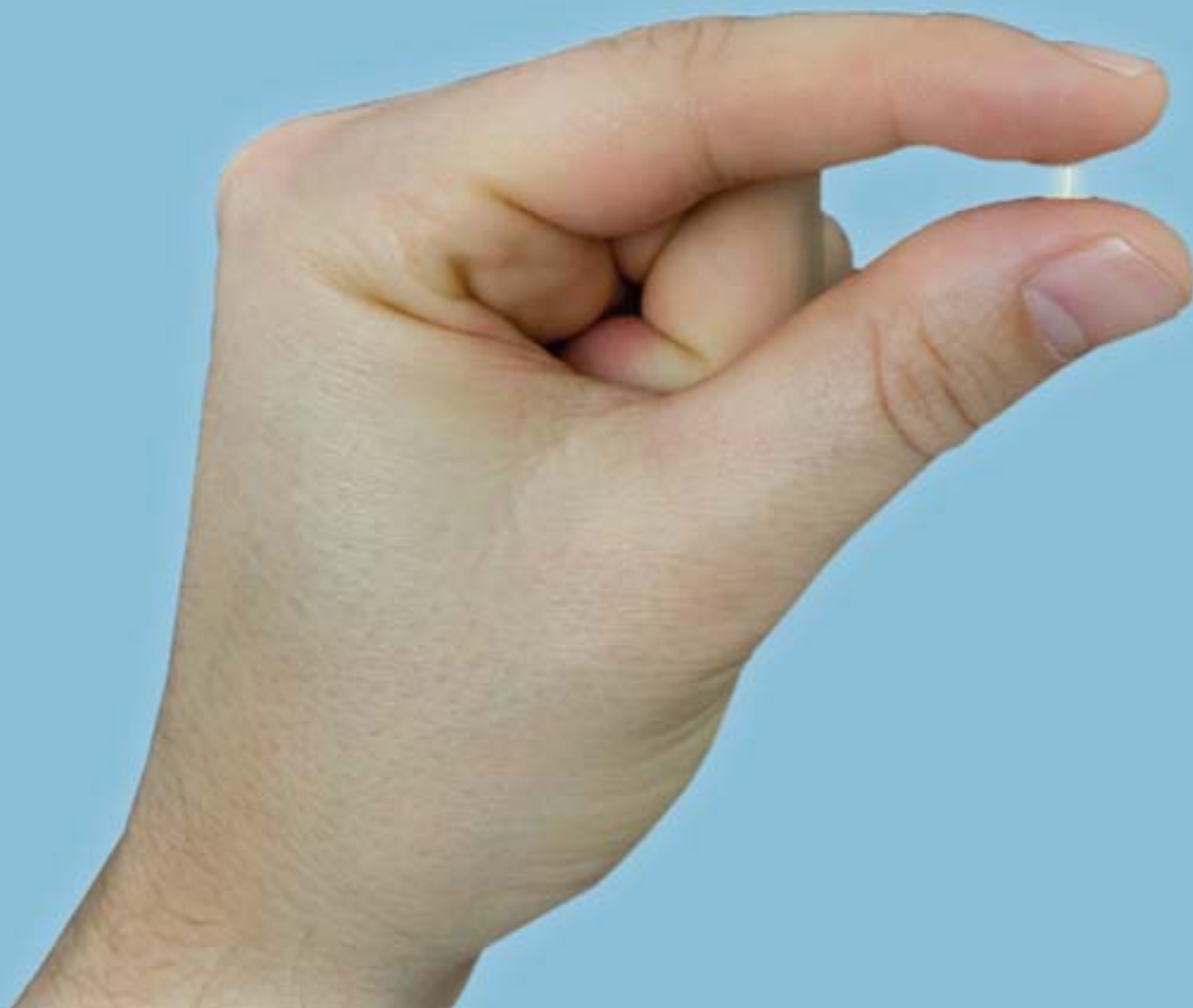


Quelle: <http://www.fastcodesign.com>



# Energie Effizienz

mit Gebäudeintelligenz die Umwelt schonen



# Ambient Assisted Living

bis ins hohe Alter zu Hause leben



Intelligentes Wohnen

# Verbessern der Lebensqualität älterer Menschen

i|Home|Lab



# Ich? Ich bin doch noch zu jung dafür!





Was bringt es mir? Brauche ich nicht!

i|Home|Lab

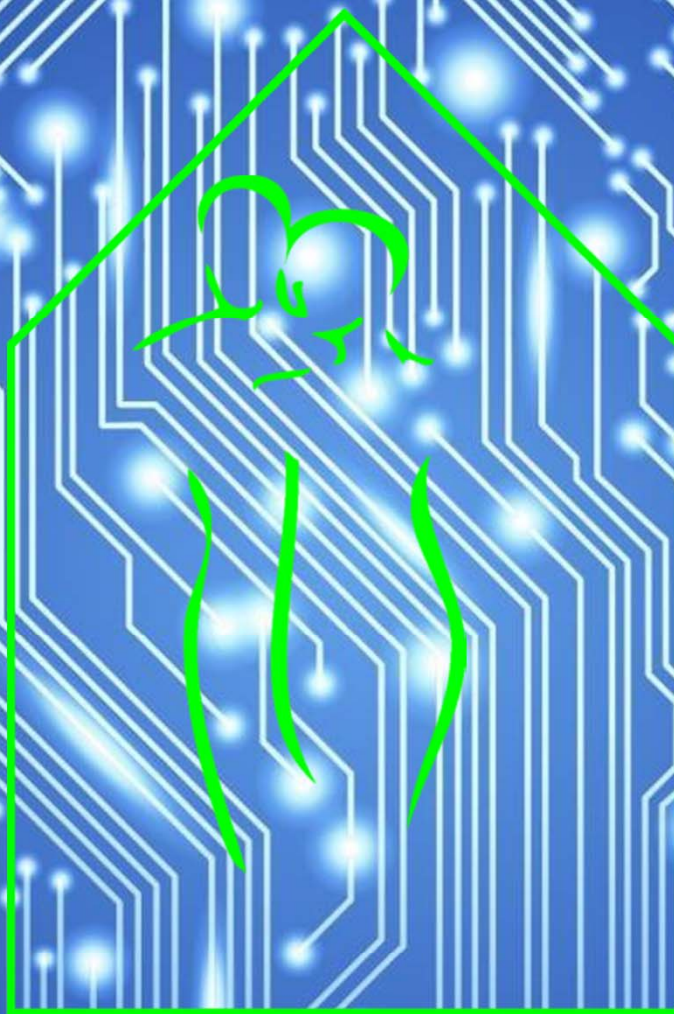


# Pflegeroboter?



# Gebäudeintelligenz

i|Home|Lab

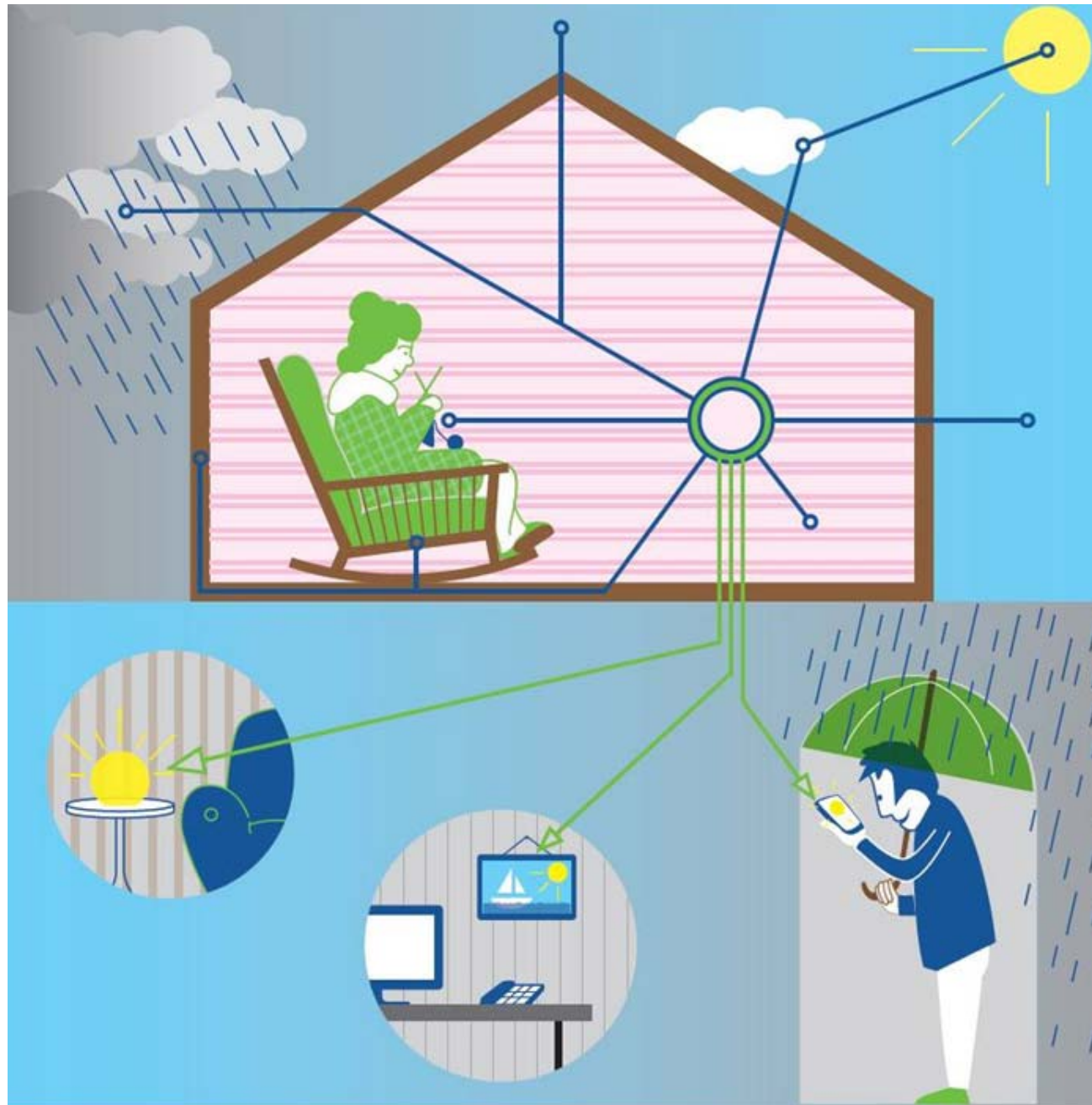


# Inaktivitätserkennung

i|Home|Lab



# Angehörige Benachrichtigen



# Internet der Dinge

## SmartHealthcare/Wellness

## iHome Lab

### SmartHome

- **Smart Shopping-List:**
  - Ex: As you leave home, a shopping list on your mobile is automatically updated...
- **Smart Energy Savings:**
  - Ex: As the last person leaves home, the thermostats in the bedrooms are tuned down...
- Etc ...

- **Smart Preventive Care:**
  - Ex: Elder people have their day-to-day activities monitored, triggering automatic responses when needed...
- **Smart Case Sheet:**
  - Ex: Medical personnel are given contextualized information on patient's conditions ...
- Etc ...

### SmartCity

- **Smart Event Management:**
  - Ex: Information about occurring and future events are automatically available to patrons and citizens
- **Smart Parking:**
  - Ex: Parking information and suggestions are made available real-time events.
- Etc ...

### SmartShopping

- **Smart Sales/Advertisement:**
  - Ex: The shop offers you personalized discounts on items outside your list but you are likely to buy
- **Smart Cross-referencing:**
  - Ex: Your wife is informed of the items you are buying and their prices...
- Etc ...

### SmartTransport/Mobility

- **Smart Navigation:**
  - Ex: Traffic information such as the approaching of an ambulance is broadcasted to vehicles on the route...
- **Smart Updating:**
  - Ex: Your peers (office, clients, family, etc.) are informed of significant delays...
- Etc...

### SmartOffice

- **Smart Meeting:**
  - Ex: Automatic exchange of business cards with new clients/colleagues in meetings...
- **Smart Secured Access:**
  - Ex: Only personnel listed to attend a security briefing can unlock the door...
- Etc ...

Delayed: 20min

16:50...

Emergency!

7:30 ...

7:00 ...

13:00...

17:00...

16:30 ...

# Solar Decathlon Europe 14 – Team Lucerne

i|Home|Lab



Your+ - Smart Sharing

# Diskutieren Sie mit uns!

iHomeLab





Lucerne University of  
Applied Sciences and Arts

**HOCHSCHULE** i|Home|Lab  
**LUZERN**

Technik & Architektur  
CC CEESAR  
FH Zentralschweiz

**Herzlichen Dank!**

[Aliaksei.Andrushevich@hslu.ch](mailto:Aliaksei.Andrushevich@hslu.ch)  
[www.iHomeLab.ch](http://www.iHomeLab.ch)

**Haben Sie Fragen?**

